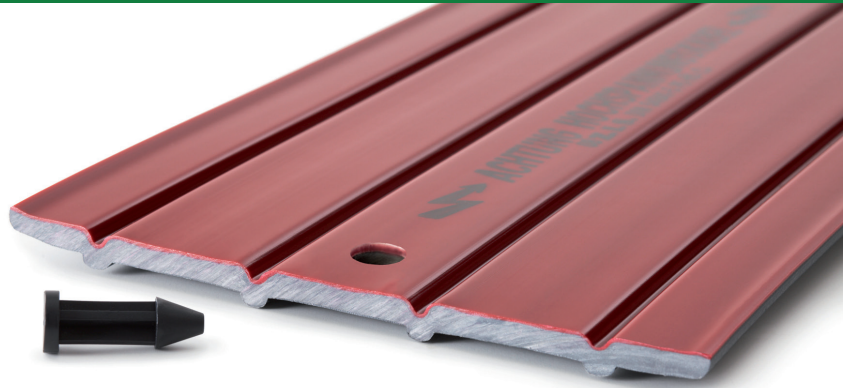




Z.I.S. SPEZIALBAUSTOFFE

## Cable cover plates



With increased mechanical protection

### Standard design

Manufactured acc. to DIN 54841-5

<b>Material</b>	PE-HD
<b>Length</b>	1.000 mm
<b>Colour surface</b>	red
<b>Thickness</b>	10 mm
<b>Labelling</b>	Achtung Starkstromkabel
<b>Longitudinal locking</b>	with punched holes and connection pin

### Possible designs

<b>Cover width</b>	100 mm to 290 mm
<b>Length</b>	300 mm to 3.000 mm
<b>Thickness</b>	3 mm to 12 mm
<b>Material</b>	PE-HD or PVC-U
<b>Colour surface</b>	yellow, blue, green, orange, black
<b>Longitudinal locking</b>	with or without punched holes and connection pin
<b>Labelling</b>	acc. to customer specifications

Item designation	Cover width (mm)	Unit (Pcs)	Pallet contents (m)
<b>KAPP+ 150</b>	150	10	500
<b>KAPP+ 200</b>	200	10	500
<b>KAPP+ 250</b>	250	10	400
<b>KAPP+ 290</b>	290	10	400

Order related manufacturing, minimum quantities by arrangement

**Z.I.S. SPEZIALBAUSTOFFE GMBH**

Karl-Rapp-Straße 1 · 92442 Wackersdorf · Germany  
 Tel.: +49 (0)94 31 / 797 99-0 · Fax: +49 (0)94 31 / 797 99-20  
 info@zis-spezialbaustoffe.de · www.zis-spezialbaustoffe.de



Wir sind Mitglied bei  
 der Gütegemeinschaft  
 Leitungstiefbau e.V.